

90% of the data in the world today has been created
in the last two years alone

Every day, we create 2.5 quintillion bytes of data

10^{18}

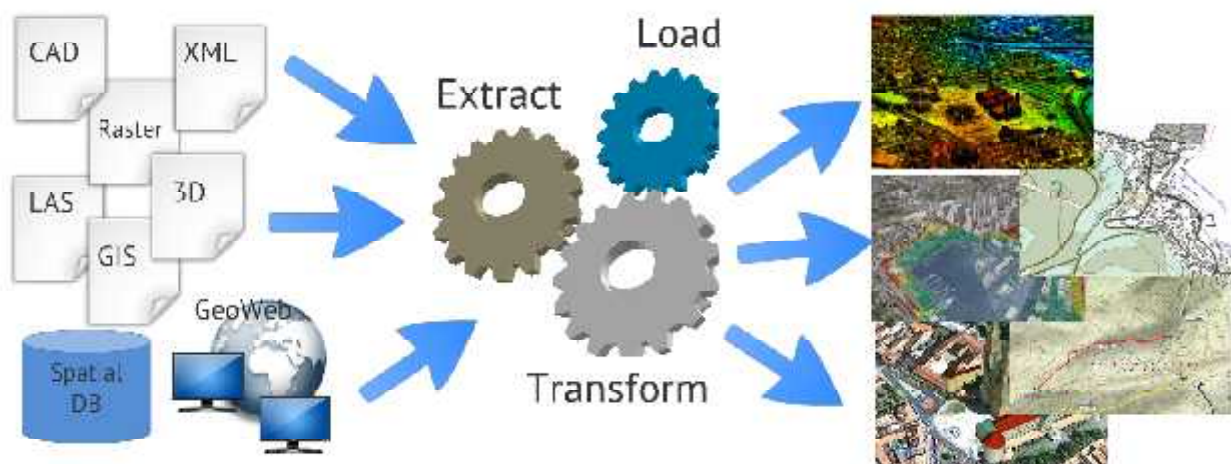
Exabyte

1 000 000 000 gigabytes

1 000 000 terabytes

Spatial ETL tools

FME, GeoKettle, Sextante, SDI Talend Open Studio



Live Demonstration

- Data inspection
- Transformation
- Format conversion
- Schema mapping
- Cataloging
- Quality control
- Spatial analysis
- XML creation
- HTTP request
- Command line execution



1. Data type?

format

size

level names

bands

histogram

CRS

Raster

TK25



DOP5



Vector

Topographic Data



1. Data type?

format

size

level names

bands

histogram

CRS

Raster

TK25



DOP5



Vector

Topographic Data



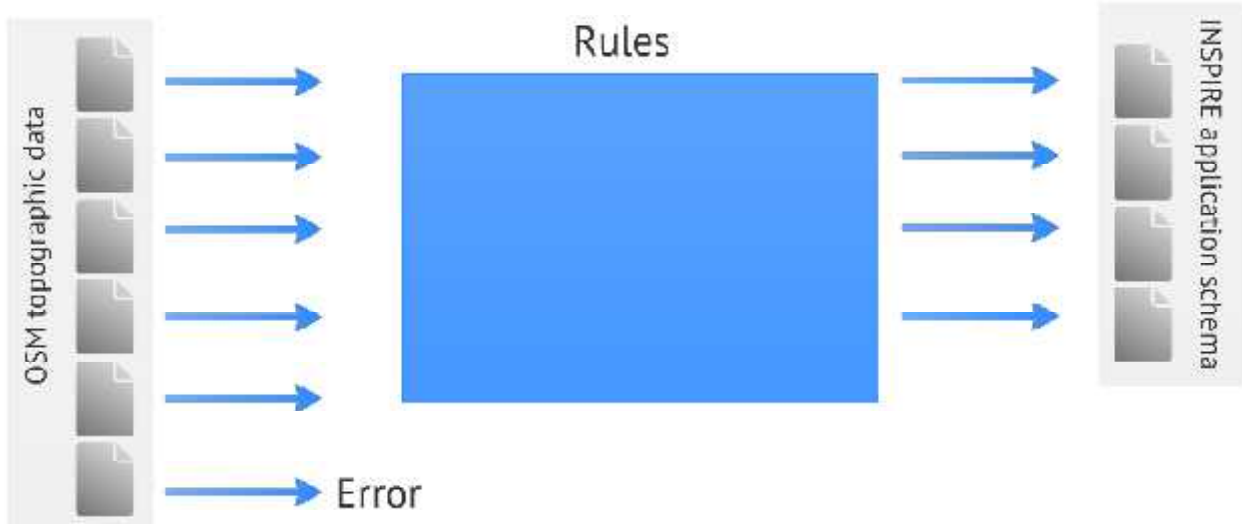
Archiving

Schema mapping

CS/W
preparation

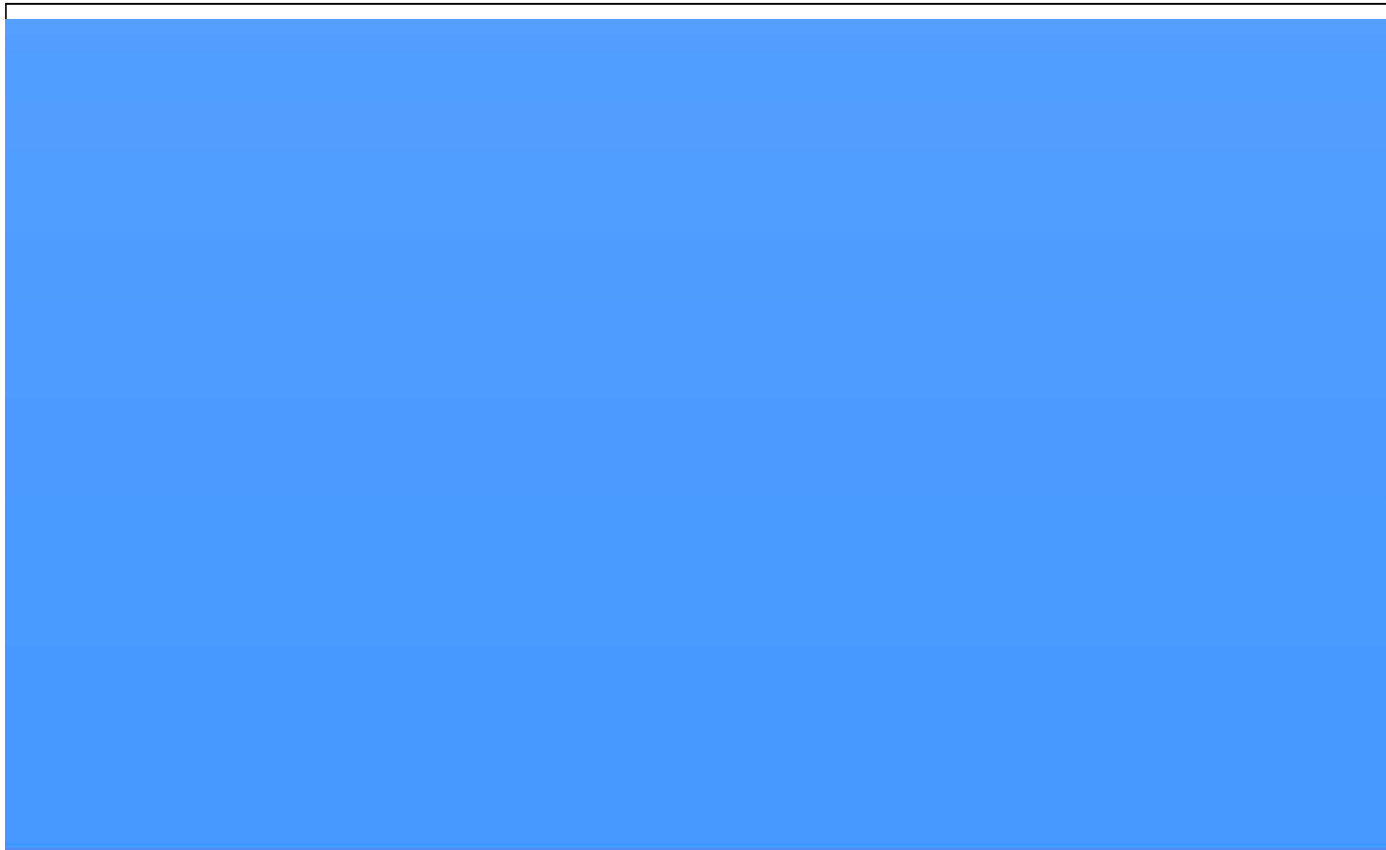


Schema mapping

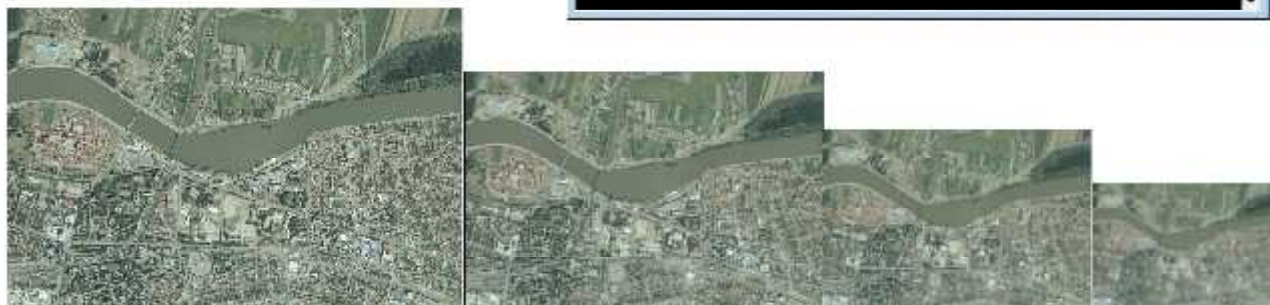
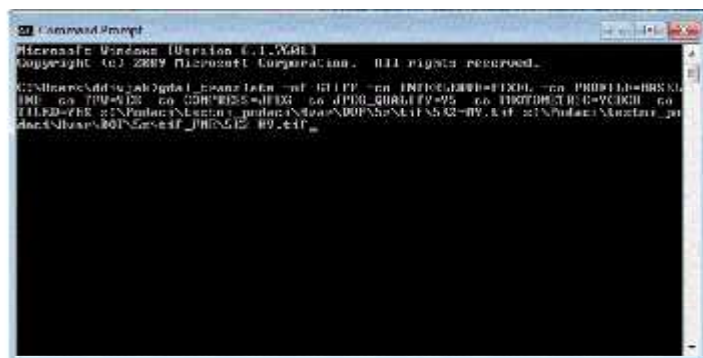


Rules

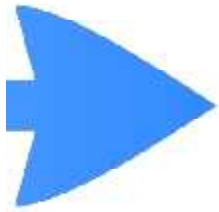




Compression
WMS preparation
Reprojection
Raster pyramid



Archiving



TK25 metadata

Default elements:

- Resource title
- Resource abstract
- Resource Type
- Resource language
- Topic category
- Keyword value
- Originating controlled vocabulary
- Lineage
- Spatial resolution
- Degree
- Specification
- Limitations on public access
- Conditions applying to access and use

Dynamic elements:

- Unique resource identifier
- westBoundLongitude
- eastBoundLongitude
- southBoundLatitude
- northBoundLatitude
- Date of publication
- Metadata date

Variable elements:

- Responsible party
- Responsible party role
- Metadata point of contact

Metadata hierarchy Resource type

Dataset series

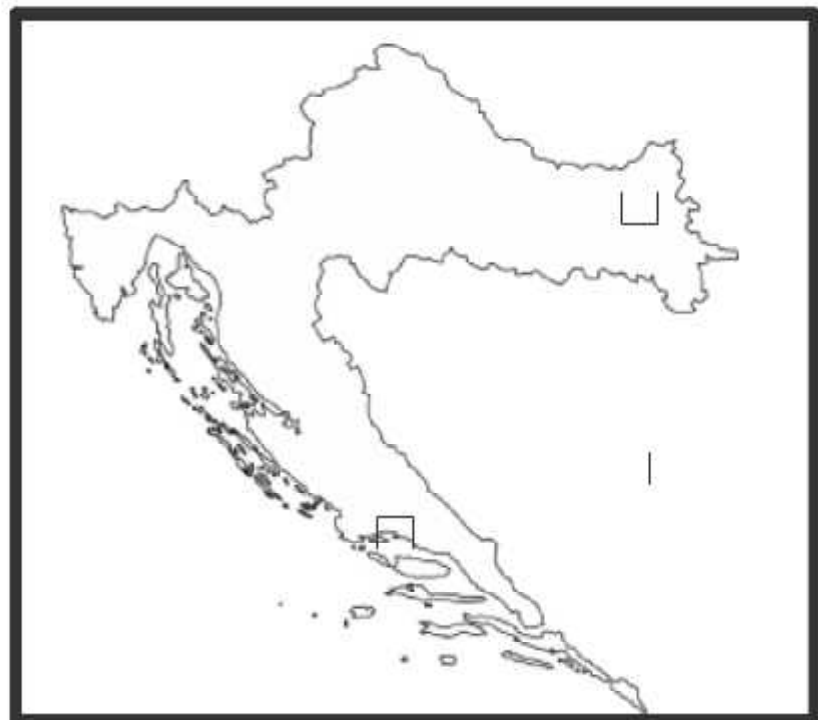
TK25
1995 - 2012

Dataset

TK25 Split
2002

TK25 Pula
1998

TK25 Osijek
2005



Raster info

TK25

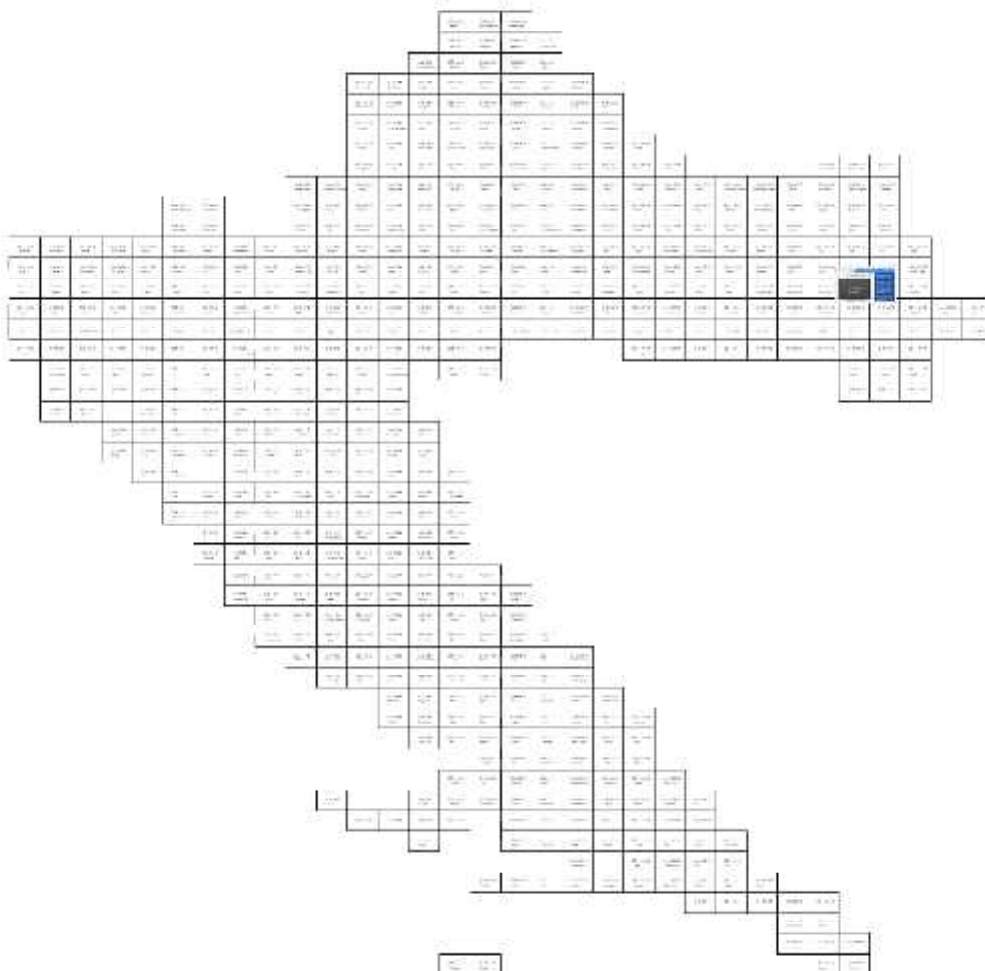


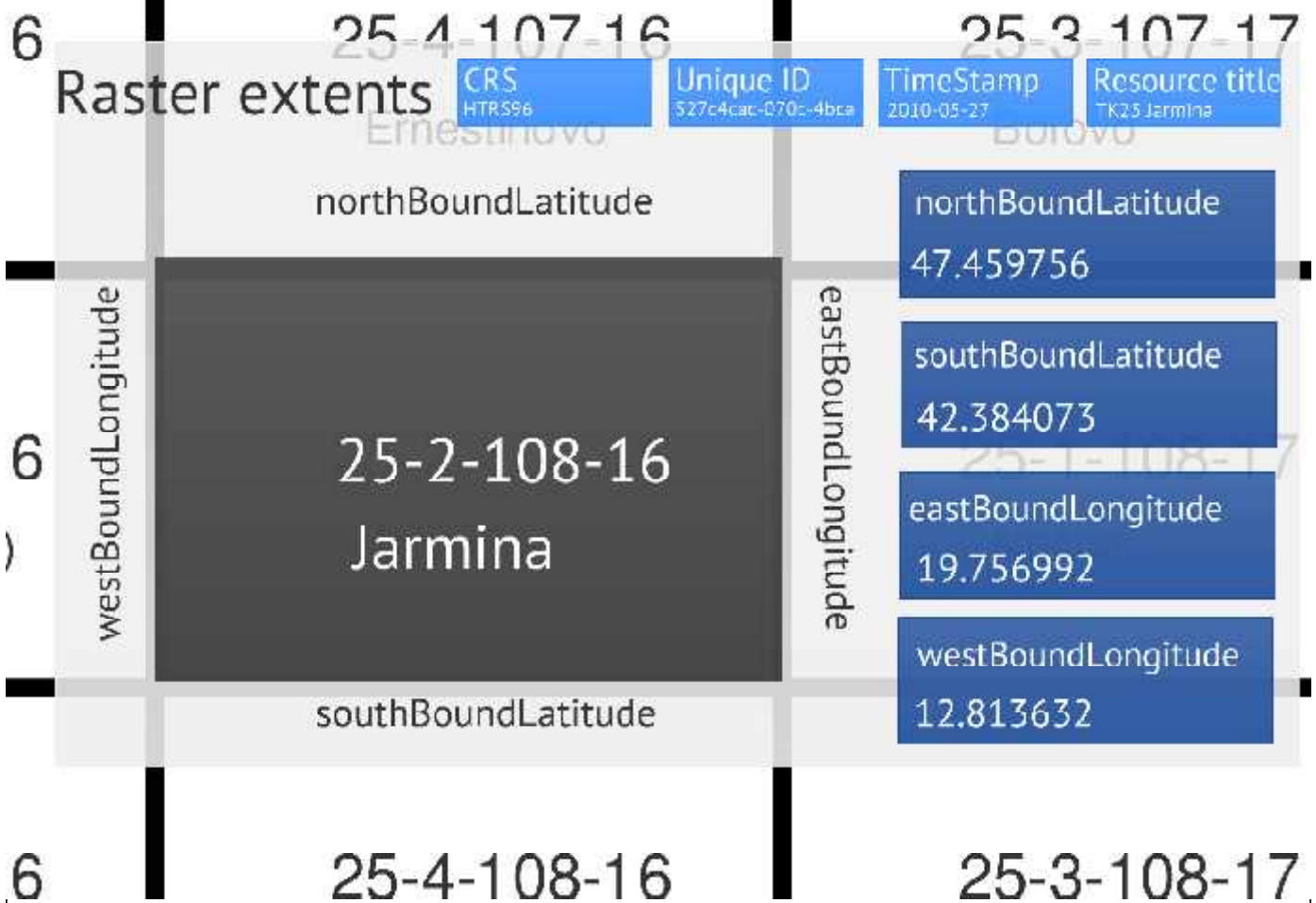
CRS
HTRS96

Resource title
TK25

Unique ID
527c4cac-070c-4bca

TimeStamp
2010-05-27





```

</gmd:topicCategory>
<gmd:extent>
  <gmd:EX_Extent>
    <gmd:geographicElement>
      <gmd:EX_GeographicBoundingBox>
        <gmd:westBoundLongitude>
          <gco:Decimal>westBoundLongitude<br/>12.813632</gco:Decimal>
        </gmd:westBoundLongitude>
        <gmd:eastBoundLongitude>
          <gco:Decimal>eastBoundLongitude<br/>19.756992</gco:Decimal>
        </gmd:eastBoundLongitude>
        <gmd:southBoundLatitude>
          <gco:Decimal>northBoundLatitude<br/>47.459756</gco:Decimal>
        </gmd:southBoundLatitude>
        <gmd:northBoundLatitude>
          <gco:Decimal>southBoundLatitude<br/>42.384073</gco:Decimal>
        </gmd:northBoundLatitude>
      </gmd:EX_GeographicBoundingBox>
    </gmd:geographicElement>
  </gmd:EX_Extent>
</gmd:extent>
</gmd:extent>

```

