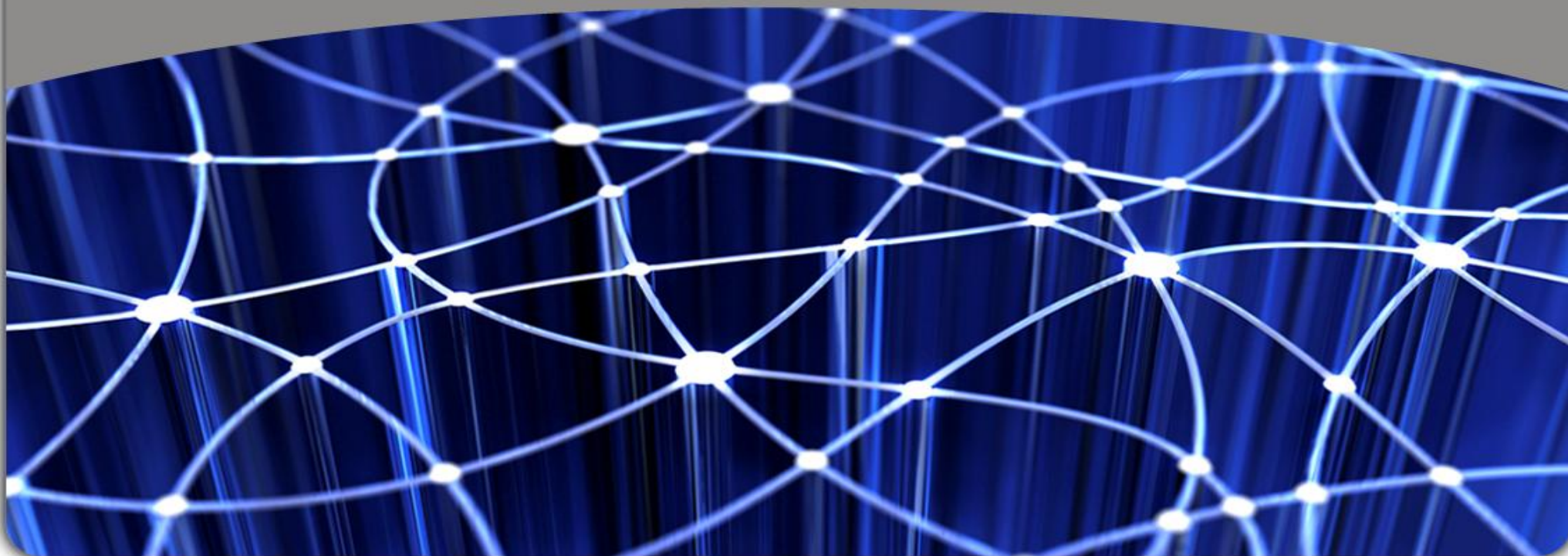




Europe, Inspire and EuroGeographics

Dave Lovell Executive Director
November 2010

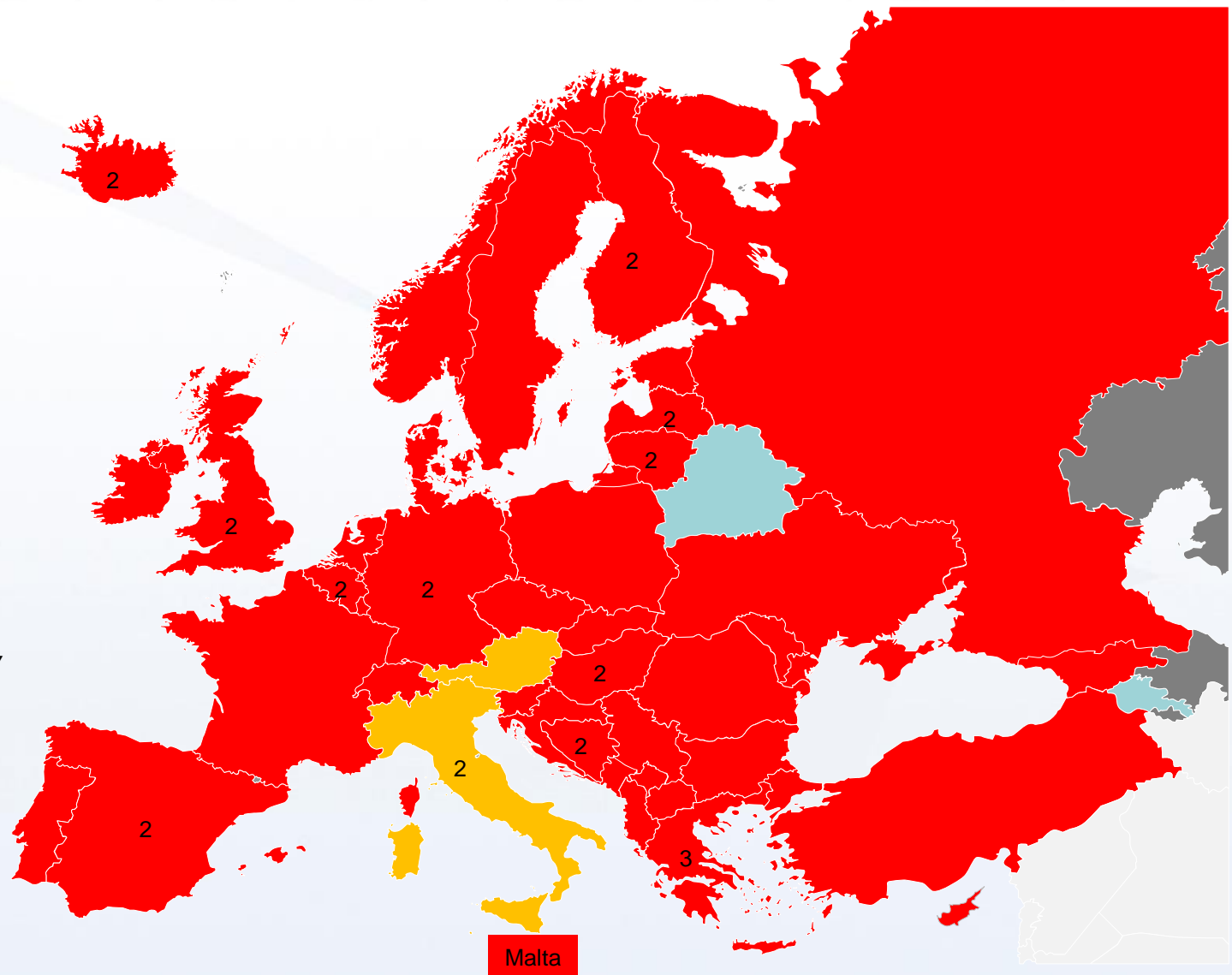


Our members

- Active
- Associate
- Pending
- Not involved

56 members
44 countries

New members:
Klimatologio Greece
Agenzia del Territorio, *Italy*
National Agency of Public
Registry, *Georgia*



INTERAKTIVNA KARTA ZAGREBA :: preglednik - Windows Internet Explorer

https://e-uprava.apis-it.hr/gup/Preglednik.aspx

Identified by VeriSign

Google

Favorites My Virgin Media - Sign in ... My Virgin Media - Sign in ...

INTERAKTIVNA KARTA ZAGREBA :: preglednik

web

gup zagreba i sesveta prostorni plan grada zagreba detaljniji prostorni planovi karta download adrese i kontakti

PRIKAŽI NA KARTI:

- Prostorni plan Grada Zagreba
- GUP Zagreba i Sesveta
- Detaljniji prostorni planovi
- Prostorne jedinice i podloge
- Preuzimanje otpada
- Škole i vrtići
- Komunalni doprinos
- Spomenici kulture i prirode

Pretraživanje

Naselje (prema RPJ): Sva naselja...

Prikaži

Ulica:

Kućni broj:

Traži Obris

Otpad-lokacije

+

-

Hand icon

Map icons

Za dobivanje dodatnih informacija potrebno je uključiti sloj unutar grupe da bi objekti sloja bili vidljivi, odabrati kategoriju unutar alata i kliknuti na ikonu INFO, te kliknuti na objekti na karti.

ncadani online

apis IT

Internet | Protected Mode: On

100%

22:47

Our Members



Content management Site building Site configuration User management Help

3 / 1 Log out Dave Lovell



Home

About us

Projects

Products & services

European initiatives

News & events

Contact us

Contacts

Member login/logout

About us

General Assemblies

Mission and objectives

★ Members

Head office

Management board

Knowledge Exchange

Networks

Association documents and formalities

★ Our Partners

Distributors

Pan-European associations

Global associations

EC & EU bodies

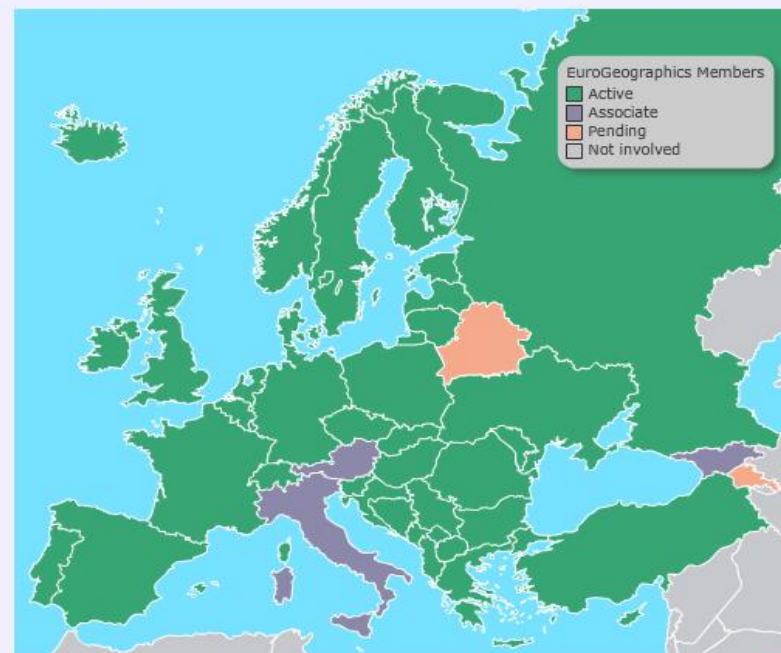
Standards

Press Office

EuroGeographics e-Newsletter

MEMBERS

Click on the map for a short overview of our members or choose from the list below to go directly to the member's website.



European Spatial Data Infrastructure Network



The European geographical information knowledge community

Latest news

23 NOV [ESDIN video on YouTube!](#)

[More latest news](#)

Events

25 NOV [How and Why to contribute to State Boundaries of Europe \(webinar\)](#)
CANCELLED

29 NOV [3D Digital Landscape Models - A](#)

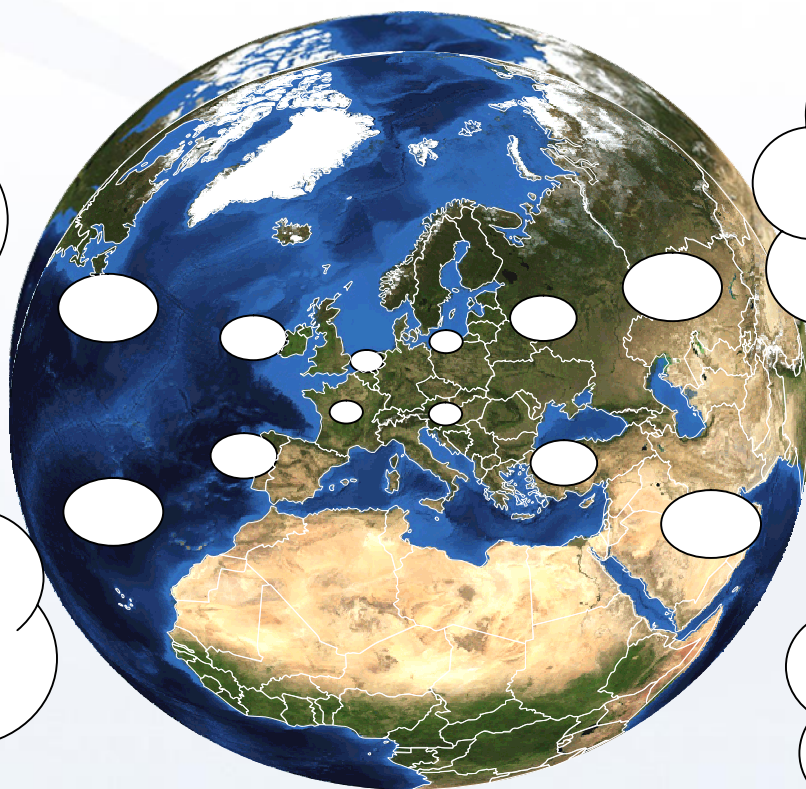
Internet | Protected Mode: On

100%

European User Needs

GMES (Global Monitoring for Environment and Security) is a European initiative for the implementation of information services dealing with **environment and security**

Communication from the Commission on **Shared Environmental Information System (SEIS)**
1st February 2008



Directive 2007/60/EC on the assessment and management of **flood risks** entered into force on 26 November 2007

Directive 2007/2/EC establishing an **Infrastructure for Spatial Information** in the European Community (INSPIRE) entered into force on the 15th May 2007

ESDIN project info (www.esdin.eu)

- Project partially funded by eContentplus programme
- Started in September 2008 and will run for 30 months until March 2011
- Coordinated by EuroGeographics with 20 project partners



ESDIN is delivering(1)

- “ Specifications . large, medium and small scales (INSPIRE+)
 - . admin, transportation, geographical names, hydrography, cadastral parcels
- “ Transformation rules from EG/National spec to ELF specifications
- “ Quality Model and Metadata specifications
- “ Automation of Quality Evaluation
- “ Generalization rules



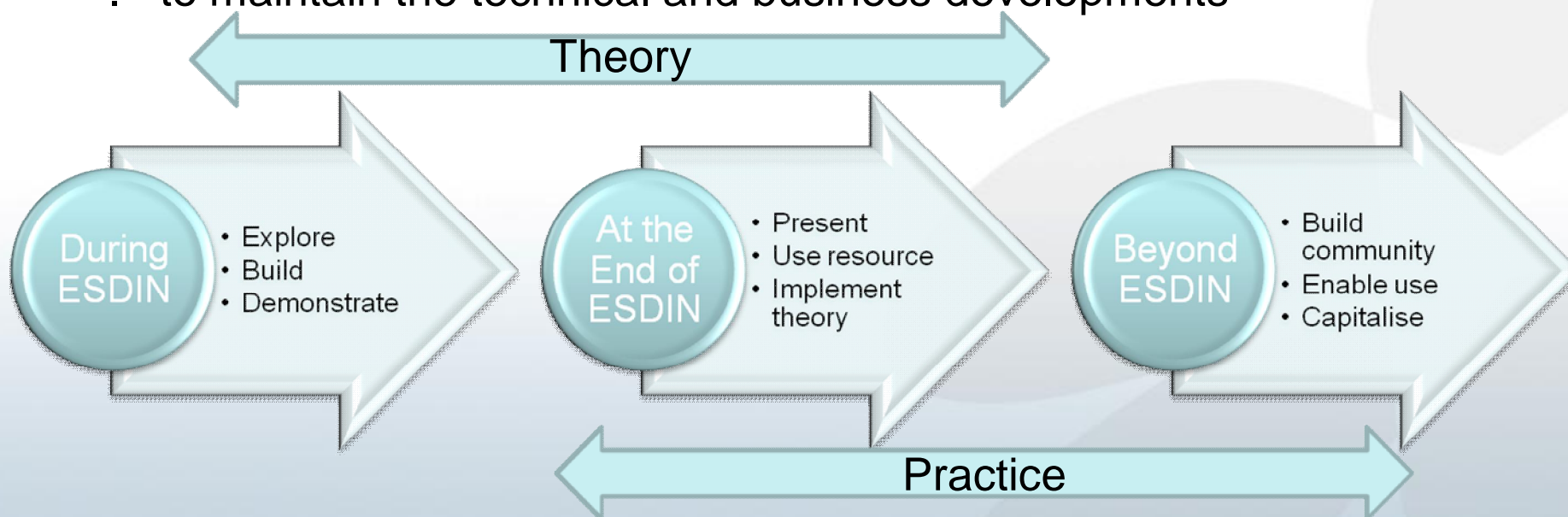
ESDIN is delivering(2)

- “ Authentication and security services
- “ Edge-matching rules and service description
- “ UID description
- “ Implementation of INSPIRE compliant download and viewing services
- “ Practical testing with key users
- “ Licensing principles



Conclusions (1)

- “ ESDIN on track
 - . to achieve its objectives and
 - . to meet the project partners commitments
- “ Early preparations for the post project period required
 - . to maintain the technical and business developments



Conclusions (2)

- “ ESDIN specifications offer the opportunity
 - . to reduce costs of the maintaining our products and services,
 - . to increase the range of our products and
 - . to provide product and service improvements

- “ ESDIN building blocks provide
 - . new framework for delivering pan-European and cross-border data to key users and other users

- “ NMCAs will maintain their leading role in the management of reference data and benefit on the shared use of services.

Actions speak louder than words



[Content management](#) [Site building](#) [Site configuration](#) [User management](#) [Reports](#) [Help](#)

1 / 1 [Log out Dave Lovell](#)

**European Spatial Data Infrastructure Network**

Co-funded by the European Union 

Search this site:

[What's ESDIN?](#) [News & Events](#) [Project Deliverables](#) [Reference Groups](#) [Contact](#)

News & Events
[News items](#)
[Press releases](#)
[Events](#)

[View](#) [Edit](#) [Track](#)



News and Events

For the latest news, events information and press releases, please select the relevant section from the navigation buttons above.

Latest news & events

23 NOV

[ESDIN video on YouTube!](#)
Video on YouTube! We are proud to release our first public video of ESDIN! This one gives an overview of the project and the newly developed data viewer. It highlights how we are bringing geographic data from the official sources to make a harmonious "whole" for Europe.

11 NOV

[ESDIN Webinar for NMCAs: Unique Identifiers maintenance - don't miss the deadline](#)
for registration! Dear colleagues, dealing with Unique identifiers (UIDs) of national databases at large scale level and at medium/small scale level, we would like to present you the solutions for UIDs - created within the ESDIN project. If you want to learn more and...

8 NOV

[Plug fest - demonstration of Shibboleth usage for INSPIRE compliant services](#)
- take part on our virtual meeting! The ESDIN project, in collaboration with the OGC, would like to invite you to a webinar demonstrating the use of Shibboleth Federations to protect OGC Web Services (OWS) on Thursday 18th November 2010 at 14.00 GMT . An output from the OWS...

1 of 23 >>



EuroGeographics represents 55 National Mapping and Cadastral Agencies from 44 countries across Europe.



The European geographical information knowledge community.

Latest news

23 NOV

[ESDIN video on YouTube!](#)
Video on YouTube! We are proud to release our first public video of ESDIN! This one gives...
[More news](#)

Latest events

Done

Internet | Protected Mode: On

100%

The current Location Framework for Europe

Reference data from Europe's National Mapping and Cadastral Agencies



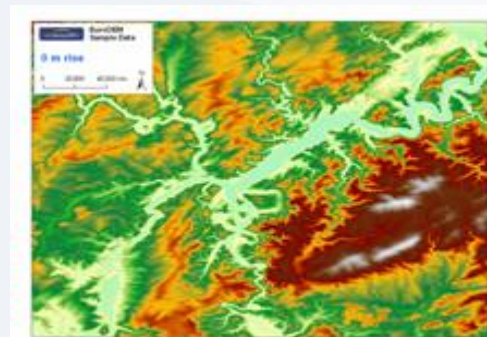
EuroBoundaryMap



EuroGlobalMap

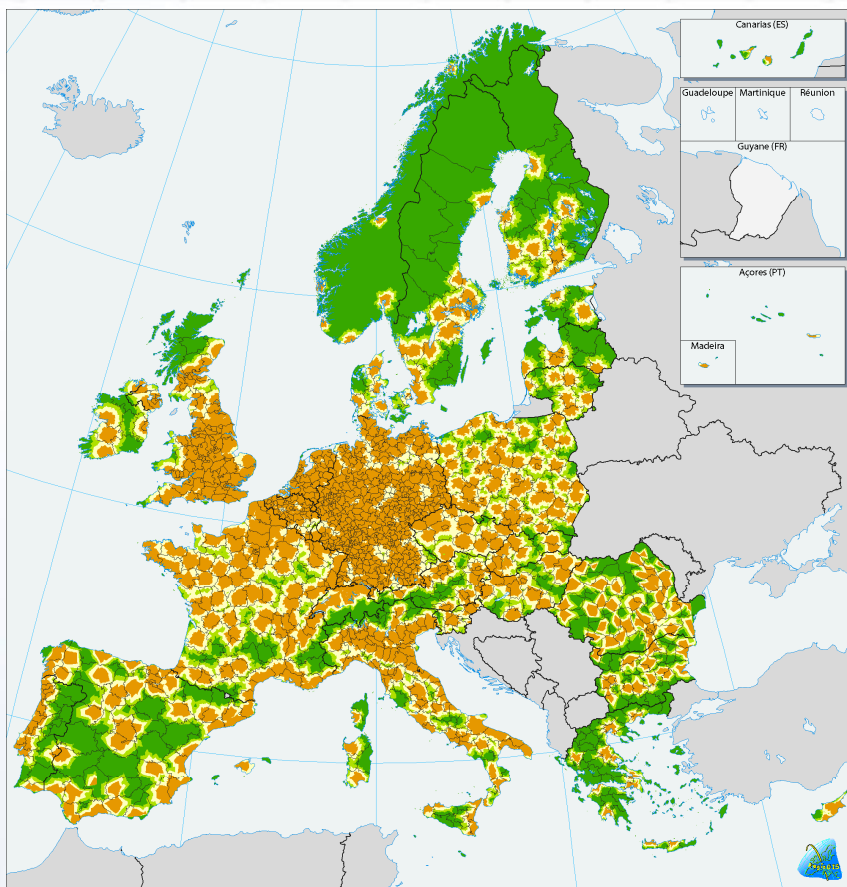


EuroRegionalMap



EuroDEM

Proximity to cities and urban/rural typology



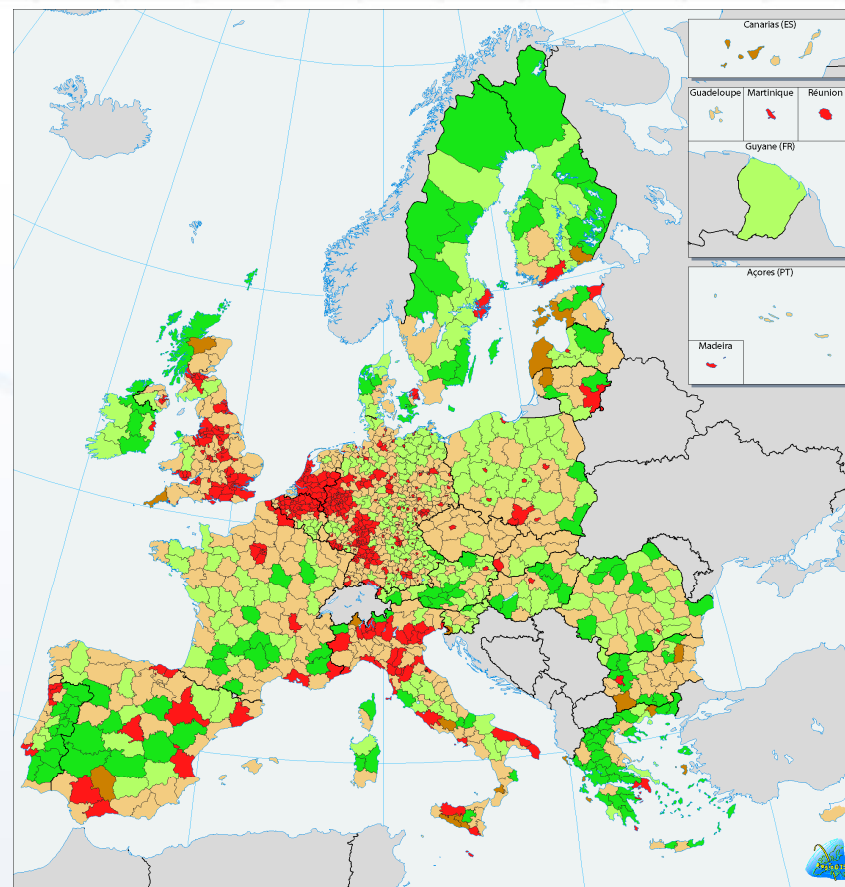
Accessibility by road to cities with at least 50000 inhabitants

- 0 - 30 minutes
- 30 - 45 minutes
- 45 - 60 minutes
- > 60 minutes

Sources: OECD, Eurostat, EuroGeographics, EEA, JRC, REGIO-GIS

0 500 Km

© EuroGeographics Association for the administrative boundaries



Urban-rural typology of NUTS3 regions

- Predominantly urban regions
- Intermediate rural regions, close to a city
- Intermediate rural, remote regions
- Predominantly rural regions, close to a city
- Predominantly rural, remote regions
- No Data

Close to a city: at least 50% of the population of the region lives at less than 45 minutes travel by road to a city of at least 50000 inhabitants
Sources: OECD (revised classification 2007), Eurostat, EuroGeographics, EEA, JRC, REGIO-GIS

0 500 Km

© EuroGeographics Association for the administrative boundaries

Europe, Inspire and EuroGeographics



Together we are stronger



Thank you!