



JRC/IES/Digital Earth & Reference Data Unit

Vlado Ceti



European Commission
Joint Research Centre
Institute for Environment
and Sustainability
Digital Earth and Reference
Data Unit

www.jrc.ec.europa.eu

*Serving society
Stimulating innovation
Supporting legislation*

Joint
Research
Centre

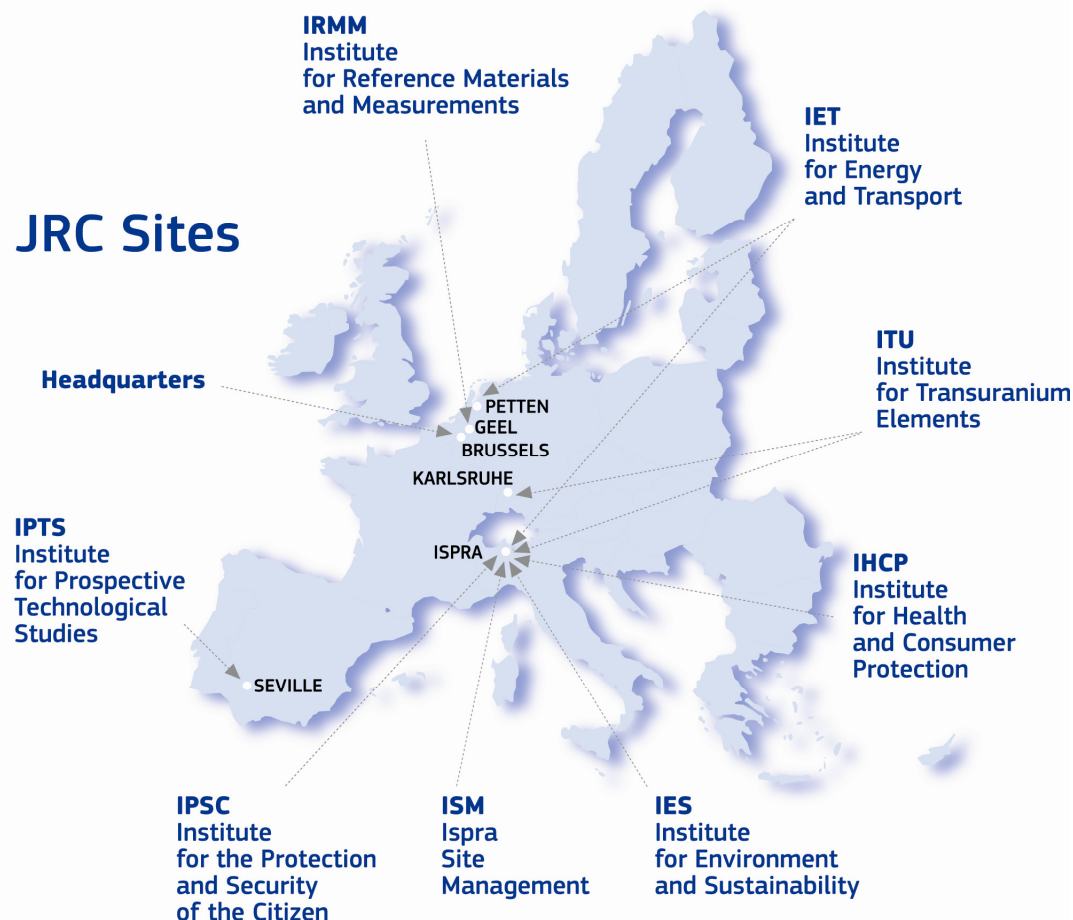
JRC overview



- Established in 1957 (Treaties of Rome)
- Is a department (Directorate-General, DG) of the EC providing independent scientific and technological support for EU policy-making
- EC consists of 33 DGs which have specialized field of actions according to a specific policy and 11 services
- It works closely on the development of EU legislation with the relevant Commission services, such as the Agricultural, Enterprise and Industry, Environment and Health, Connect and Consumers DGs
- Staff of around 2900
- Annual budget of around €330 million

JRC overview

JRC Sites



JRC Institutes

- **IRMM** – *Geel, Belgium*
Institute for Reference Materials and Measurements
- **ITU** – *Karlsruhe, Germany, and Ispra, Italy*
Institute for Transuranium Elements
- **IET** – *Petten, The Netherlands, and Ispra, Italy*
Institute for Energy and Transport
- **IPSC** – *Ispra, Italy*
Institute for the Protection and Security of the Citizen
- **IES** – *Ispra, Italy*
Institute for Environment and Sustainability
- **IHCP** – *Ispra, Italy*
Institute for Health and Consumer Protection
- **IPTS** – *Seville, Spain*
Institute for Prospective Technological Studies


JRC Ispra

- Area of the JRC Ispra
- Staff of the JRC Ispra
- Original JRC Ispra
Comitato Inter-Comunitario
l'Energia Atomica
- In 1962 the JRC Ispra
transferred to the
Commisssion
- The new JRC Ispra
Ispra was founded in
1983





<http://ec.europa.eu/dgs/jrc/index.cfm?id=3080>



JOINT RESEARCH CENTRE

The European Commission's in-house science service

European Commission > JRC > JRC Activities > Enlargement & integration action



- At a glance
- Activities
- Press
- News & Events
- Download
- Collaborations
- Jobs

Activities

- Research areas
- Competitive activities
- Scientific & technical reference function
- Research4U
- Enlargement & integration action**
 - E&IA Activities
 - E&IA Frequently Asked Questions
 - Archive
- IPR management & technology transfer
- Project Browser

Related news

- Danube Innovation Partnership
- The Politics and Economics of European Energy Security

Print this   Share

Enlargement & integration action

The Joint Research Centre (JRC) provides scientific and technical support to countries on the road towards EU membership, New Member States and Horizon 2020 Associated Countries. It supports the transfer of the EU legal framework (acquis communautaire) to national legislation and facilitates scientific and technical exchange.

Activities (workshops, training courses and conferences)

In the frame of the Enlargement and Integration Action the JRC offers specialised workshops, conferences and advanced training courses within its areas of competence. The workshops are set up to allow competent organisations in the new Member State, Candidate Countries, Potential Candidate Countries, Framework Programme Associated Countries, and on an ad-hoc basis European Neighbourhood Policy Partner Countries and Russia to study the scientific and technical methods and techniques underpinning EU policy implementation. They also provide an opportunity for EU organisations to learn about the methods currently used in those countries and for both parties to discuss how the EU legislation should be implemented in the future.

- Planned workshops and training courses for 2014

Job opportunities

The JRC offers altogether 40 temporary positions for experts from research organisations, public administration bodies, national enforcement laboratories and scientists from the following countries:

• Albania	• Bosnia and Herzegovina
• Former Yugoslav Republic of Macedonia	• Faroe Islands
• Israel	• Iceland
• Montenegro	• Liechtenstein
• Norway	• Moldova
• Switzerland	• Serbia
	• Turkey

E&IA Contact

For questions please use the following e-mail address: jrc-enlargement@ec.europa.eu

As the Commission's in-house science service, the Joint Research Centre's mission is to provide EU policies with independent, evidence-based scientific and technical support throughout the whole policy cycle. Working in close cooperation with policy Directorates-General, the JRC addresses key societal challenges while stimulating innovation through developing new methods, tools and standards, and sharing its know-how with the Member States, the scientific community and international partners.

Last update: 19 December 2013

[Top](#) | [FAQ](#) | [Index](#) | [Contact](#) | [Search](#) | [Services](#) | [JRC websites](#) | [Privacy statement](#)

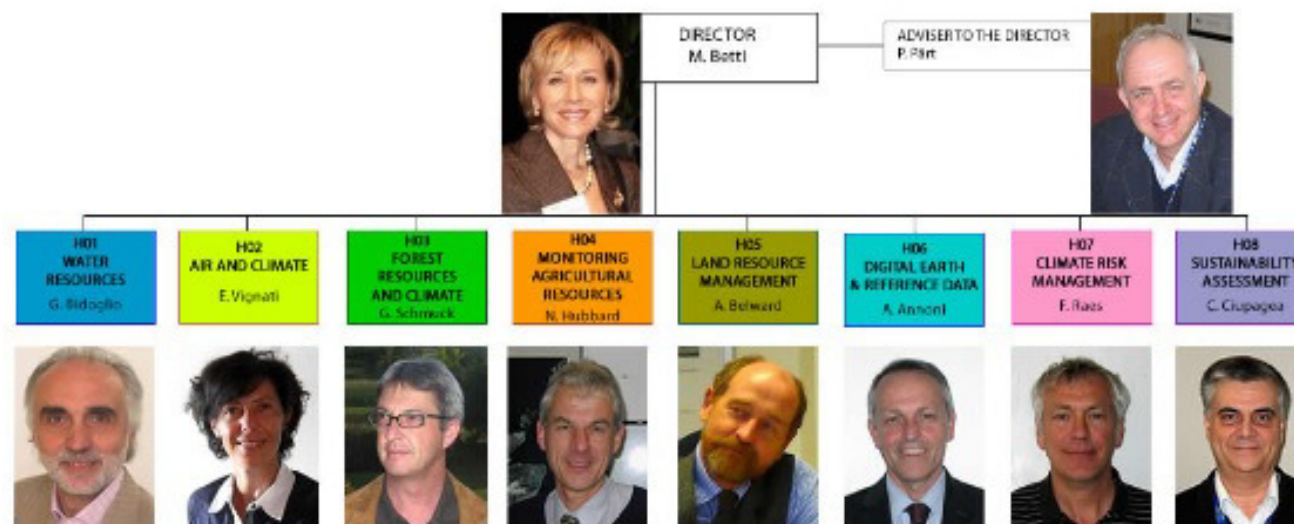
Institute for Environment and Sustainability (IES)



- Mission is to provide scientific and technical support to EU policies for the protection of the European and global environment
- IES carries out research to understand the complex interactions between human activity and the physical environment, and how to manage strategic resources (water, land, forests, food, minerals, etc.) in a more sustainable manner
- IES provides the scientific basis for the conception, development, implementation and evaluation of EU policies that promote the greening of Europe and the global sustainable management of natural resources

IES Organisational Chart

Schematic Diagram of the IES (Directorate H)



- H01 - [Water Resources Unit](#)
- H02 - [Air and Climate Unit](#)
- H03 - [Forest Resources and Climate Unit](#)
- H04 - [Monitoring Agricultural Resources Unit](#)
- H05 - [Land Resource Management Unit](#)
- H06 - [Digital Earth & Reference Data Unit](#)
- H07 - [Climate Risk Management Unit](#)
- H08 - [Sustainability Assessment Unit](#)

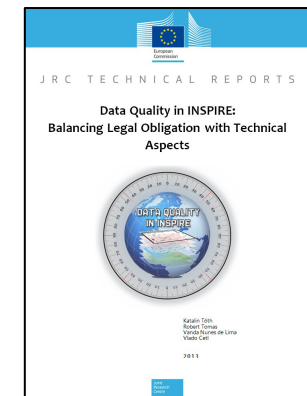
Digital Earth & Reference Data Unit

- The ambition is to develop a digital replica of our planet providing globally shared access to the best available quality data, models, and scenarios necessary to support EU policy, public participation, and scientific research about sustainable future
- Overall technical coordination of the INSPIRE Directive
- INSPIRE Maintenance and Implementation
- INSPIRE Evolution



Digital Earth & Reference Data Unit

- Original role
 - Preparation of the INSPIRE Directive, IR for Metadata, Data specifications, Network services and Interoperability
 - Development and upgrading of the INSPIRE GeoPortal
 - Technical coordination with other EU and international initiatives
 - Work with international standardisation bodies (e.g. ISO/TC211, CEN/TC 287 and OGC)
- In the meantime the role of Unit has evolved ...
 - Implementation and Development
 - Management and coordination of communication with SDIC and LMO
 - CB assessments



More information

- INSPIRE
- <http://inspire.jrc.ec.europa.eu/>
- JRC
- <http://ec.europa.eu/dgs/jrc/>
- IES
- <http://ies.jrc.ec.europa.eu/>
- DE & RD
- <http://ies.jrc.ec.europa.eu/the-institute/units/digital-earth-and-reference-data.html>